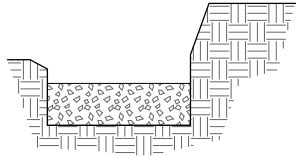
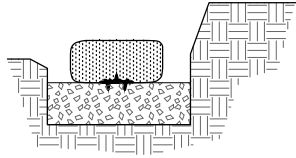


STEP ONE



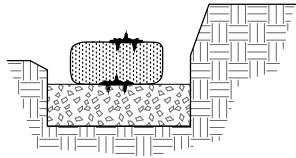
PREPARE A SHALLOW TRENCH, MINIMUM 12"/300mm, ADD 6"/150mm GRAVEL FOR LEVELLING OR PER ENGINEER SPECIFICATION

STEP TWO



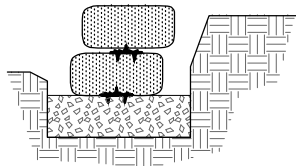
PLACE INTERLOCKING PLATE ON GROUND, PLACE 1ST ROW OF FLEX MSE GTX BAGS TIGHTLY TOGETHER. DO NOT OVERLAP BAGS. BAG LENGTH SEAMS ORIENTED TO THE BACK

STEP THREE



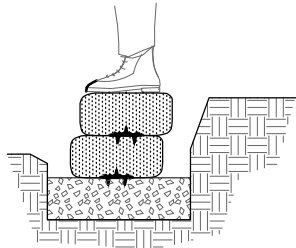
PLACE FLEX MSE INTERLOCKING PLATE. EACH INTERLOCKING PLATE, ACCORDING TO DIRECTIONS, AND REQUIRED SLOPE ANGLE. STRADDLES TWO FLEX MSE GTX BAGS - PRESS TO INTERCONNECT WITH GTX BAG

STEP FOUR

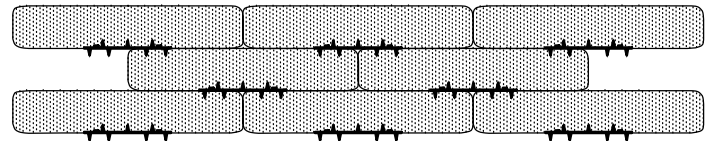
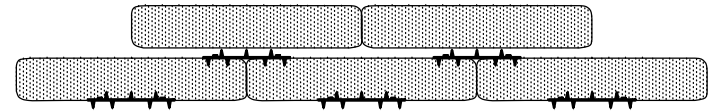
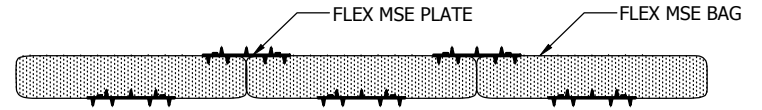
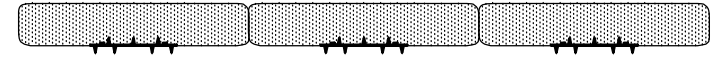


PLACE NEXT ROW OF FLEX MSE GTX BAGS IN "RUNNING BOND", ACCORDING TO REQUIRED FACING ANGLE - BACK FILL AND COMPACT AS REQUIRED

STEP FIVE



APPLY PRESSURE TO TOP OF BAG TO LIGHTLY COMPACT AND ENGAGE INTERLOCK



SECTION

INSTALLATION PROCESS

SCALE = N.T.S

ELEVATION

No.	DATE	REVISION	BY

THE PURPOSE OF THIS DRAWING IS FOR PRELIMINARY DESIGN ONLY. THIS DRAWING SHOULD NOT BE USED FOR FINAL DESIGN OR CONSTRUCTION WITHOUT THE CERTIFICATION OF A PROFESSIONAL ENGINEER REGISTERED IN THE REGION IN WHICH THE WALL WILL BE BUILT. THE ACCURACY AND USE OF DETAILS CONTAINED IN THIS DOCUMENT ARE THE SOLE RESPONSIBILITY OF THE USER. THE USER MUST VERIFY EACH DETAIL FOR ACCURACY AS THEY PERTAIN TO THEIR PARTICULAR PROJECT.



PH: 1-877-349-5945
 E: INFO@FLEXMSE.COM
 WEB: WWW.FLEXMSE.COM

DETAIL
INSTALLATION PROCESS

DATE

SCALE N.T.S

DRAWING NO. 1 OF 1